

ASME BPE TUBE FITTINGS



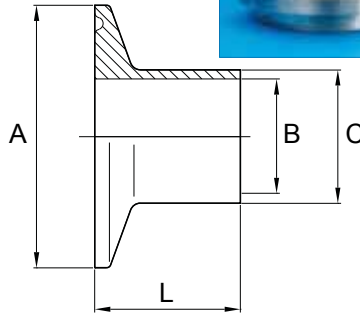
Axiom Process specialises in fabrication for the pharmaceutical and biotech industries, designing and manufacturing in accordance with ASME BPE principles. We also supply a range of tube fittings and components which are compliant with the ASME Bioprocessing Equipment Standard.




The ASME BPE standard dictates specific conditions for the bioprocessing industry in terms of design, materials, construction, surface finish and inspection.

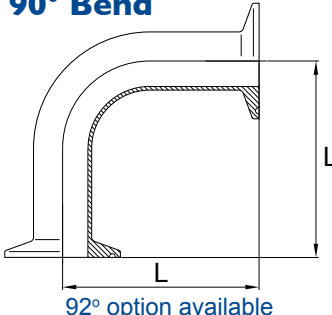
ASME BPE Surface Finish			
Surface	Ra Max.		Polishing
Designation	μ-in.	μ-m	Criteria
SF0	No Finish Requirement		
SF1	20	0.51	Mechanical
SF2	25	0.64	Mechanical
SF3	30	0.76	Mechanical
SF4	15	0.38	Electro-Polished
SF5	20	0.51	Electro-Polished
SF6	25	0.64	Electro-Polished
Surface finish designation should be referenced for all ASME BPE fittings, tubes & components			

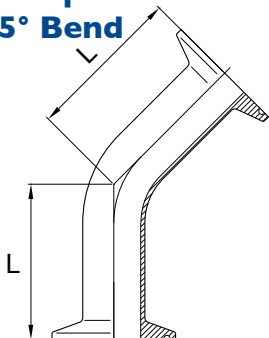
Clamp Ferrule





Nominal Size	Clamp OD A	Bore ID B	Tube OD C	Clamp Length "L"		
				Long	Standard	Short
1/4"	24.99	4.57	6.35	44.5	28.7	12.7
3/8"	24.99	7.75	9.53	44.5	28.7	12.7
1/2"	24.99	9.40	12.70	44.5	28.7	12.7
3/4"	24.99	15.75	19.05	44.5	28.7	12.7
1"	50.39	22.10	25.40	44.5	28.7	12.7
1 1/2"	50.39	34.80	38.10	44.5	28.7	12.7
2"	63.91	47.50	50.80	57.2	28.7	12.7
Larger sizes available - up to 6"						
Material = 316L - LS 1.4435						

Clamp Ended 90° Bend		<div>Clamp Ended 90° Bend</div> 
Nominal	Ctr - Face	
Size	L	
1/4"	41.3	
3/8"	41.3	
1/2"	41.3	
3/4"	41.3	
1"	50.8	
1 1/2"	69.9	
2"	88.9	
Larger sizes available - up to 6"		
Material = 316L - LS 1.4435		

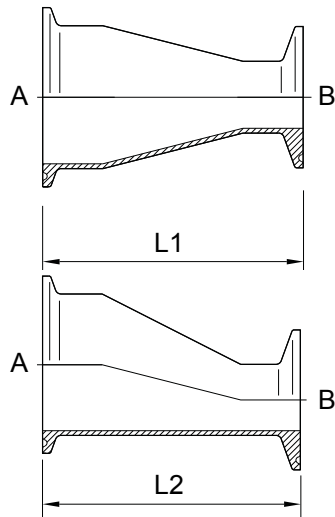
Clamp Ended 45° Bend		<div>Clamp Ended 45° Bend</div> 
Nominal	Ctr - Face	
Size	L	
1/4"	25.4	
3/8"	25.4	
1/2"	25.4	
3/4"	25.4	
1"	28.6	
1 1/2"	36.5	
2"	44.5	
Larger sizes available - up to 6"		
Material = 316L - LS 1.4435		

DIMENSIONS ARE IN MM UNLESS OTHERWISE STATED.

ALL DATA IS PROVIDED IN GOOD FAITH AND IS SUBJECT TO CHANGE.

Tel: +44 (0)1792 883882 Web: www.axiumprocess.com Fax: +44 (0)1792 886049

ASME BPE TUBE FITTINGS



Clamp Ended Concentric Reducer



Clamp Ended Concentric & Eccentric Reducers

Nominal Size		Concentric	Eccentric
A	B	L1	L2
3/4"	1/2"	50.8	50.8
1"	1/2"	63.5	63.5
	3/4"	50.8	50.8
1 1/2"	3/4"	76.2	76.2
	1"	76.2	76.2
2"	1"	127.0	127.0
	1 1/2"	76.2	76.2

Larger sizes available - up to 6"

Material = 316L - LS 1.4435

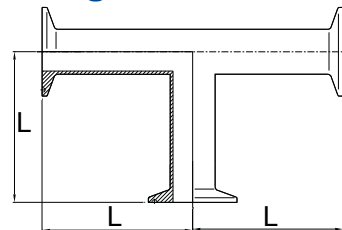
Clamp Ended Straight Tee

Nominal Size	Ctr - Face Dim 'L'
1/4"	57.2
3/8"	57.2
1/2"	57.2
3/4"	60.3
1"	66.7
1 1/2"	73.0
2"	85.7

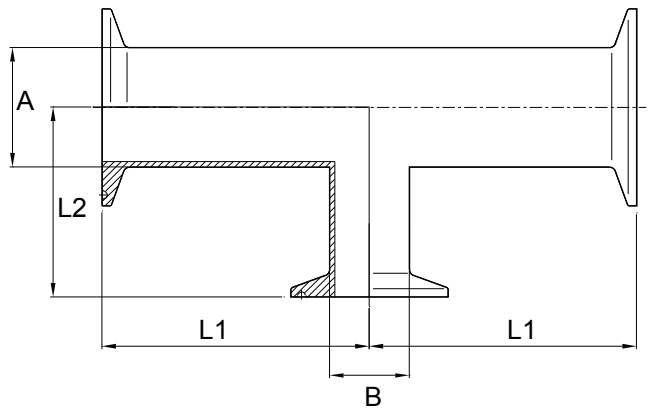
Larger sizes available - up to 6"

Material = 316L - LS 1.4435

Clamp Ended Straight Tee



Clamp Ended Reducing Tee



Clamp Ended Reducing Tee

Nominal Size		Dim L1	Dim L2
A	B	L1	L2
3/8"	1/4"	57.2	25.4
1/2"	1/4"	60.3	25.4
	3/8"	60.3	25.4
3/4"	1/4"	63.5	25.4
	3/8"	63.5	25.4
	1/2"	63.5	25.4
1"	1/4"	66.7	28.6
	3/8"	66.7	28.6
	1/2"	66.7	28.6
	3/4"	66.7	28.6
1 1/2"	1/2"	73.0	34.9
	3/4"	73.0	34.9
	1"	73.0	34.9
2"	1/2"	85.7	41.3
	3/4"	85.7	41.3
	1"	85.7	41.3
	1 1/2"	85.7	41.3

Larger sizes available - up to 6"

Material = 316L - LS 1.4435

We also supply Plain-ended options which are ASME BPE compliant.

Axium Process Ltd

Hendy Industrial Estate, Hendy
Swansea, UK
SA4 0XP

Tel: +44 (0) 1792 883882

Fax: +44 (0) 1792 886049

Email: info@axiumprocess.com

Web: www.axiumprocess.com



We specialise in customised fabrication providing engineering solutions to customer requirements.



All data is provided in good faith and is subject to change
Copyright 2010 Ref:ASME-01-01