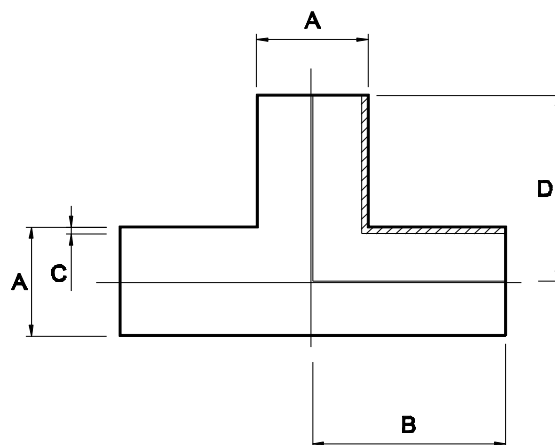


8080

Plain-ended equal tee 316L



Nom size	A	B	C	D	Stock No
1/2"	12.7	32.0	1.6	32.0	8073-6013
3/4"	19.1	44.5	1.6	44.5	8073-6016
*1"	25.4	43.5	1.6	43.5	8073-6019
*1 1/2"	38.1	63.5	1.6	63.5	8073-6026
*2"	50.8	88.5	1.6	88.5	8073-6038
*2 1/2"	63.5	113.5	1.6	113.5	8073-6051
*3"	76.2	133.5	1.6	133.5	8073-6064
*4"	101.6	173.5	2.0	173.5	8073-6076

TECHNICAL DATA	
Associated Standards	*1" – 4" = BS 4825 : Part 2 : 1991, ASTM A269, ASTM A270, ASTM A312
Material	316L Stainless Steel
Material Certification	BS EN 10204/DIN 50049 3.1 for all wetted parts
Finish	ID polished to 1.0 µm Ra, Descaled OD TO 2.5 µm Ra
Tolerance	+/- 1.0 mm
Plain-Ended Fittings Options	Tees, 90°, 45° & 180° bends, hoesetails, concentric & eccentric reducers, Y pieces, Crosses
Notes	Dimensions are provided in good faith. Seals must be chosen for required operating medium and temperature
GENERAL CAPABILITIES	
Design and System Fabrication, Hygienic Process Plant, Project Management, In-house Manual and Orbital Welding, Machining, Fabrication and Polishing, Component Customisation	
Full materials certification, weld maps, logs, welder qualifications and weld procedures, pickling, passivation and ferroxyl certification.	

D8080-V02 / ECN 730

CUSTOMISED STAINLESS STEEL SYSTEMS, FABRICATIONS AND COMPONENTS

Axium Process Ltd

Hendy Industrial Estate, Hendy, Swansea, UK SA4 0XP

Tel: +44 (0) 1792 883882

Fax: +44 (0) 1792 886049

Email: info@axiumprocess.com

Web: www.axiumprocess.com



All data is provided in good faith and is subject to change