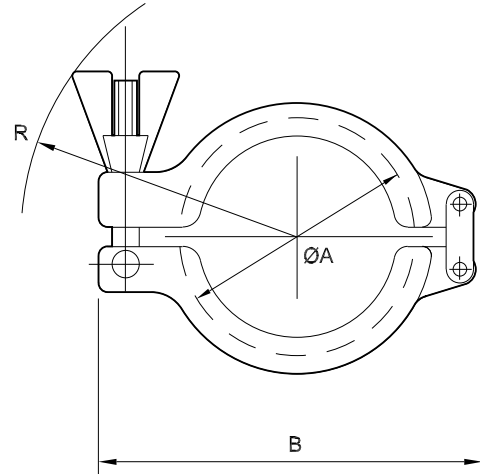


## 5021-02

### Clamp heavy duty metric 316L BS4825\*

Nom size	A	B	R	Max Op Pressure (bar) @ 150 C	Stock No
10	34.0	85.0	67.0	50	5021-5010
15	34.0	85.0	67.0	50	5021-5015
20	34.0	85.0	67.0	50	5021-5020
25	50.5	109.0	88.0	50	5021-5025
50	64.0	123.0	93.0	50	5021-5050
65	91.0	150.0	105.0	40	5021-5065
80	106.0	165.0	110.0	40	5021-5080
100	119.0	185.0	119.0	35	5021-5100
125	155.0	252.0	155.0	30	5021-5125
150	183.0	280.0	164.0	30	5021-5150
200	233.0	333.0	185.0	20	5021-5200
250	268.0	382.0	213.0	16	5021-5250
300	319.0	458.0	242.0	16	5021-5300



TECHNICAL DATA	
Associated Standards	*BS 4825-3 (1"-4" inclusive), ASME BPE 2009, ISO 1127 (2852), DIN 32676, SMS 3008
Material	316 Stainless Steel
Material Certification	BS EN 10204/DIN 50049 3.1 for all wetted parts
Finish	External 0.8Ra as standard
Tolerance	+/- 1.0mm
Options	250 and 300 double bolt only
Clamp Fittings Range	Unions, ferrules, blanks, tees, bends, hoseliners, adaptors, concentric & eccentric reducers, Y pieces
Seals	FDA & USP Class VI approved polymers including EPDM, Nitrile, Silicone, Platinum Cured Silicone, Encapsulated & Solid PTFE, Viton® (Viton is a registered trade mark of Dupont Dow Elastomers).
Notes	Dimensions are provided in good faith. Seals must be chosen for required operating medium and temperature
GENERAL CAPABILITIES	
Design and System Fabrication, Hygienic Process Plant, Project Management, In-house Manual and Orbital Welding, Machining, Fabrication and Polishing, Component Customisation	
Full materials certification, weld maps, logs, welder qualifications and weld procedures, pickling, passivation and ferroxyl certification.	

D5021-02-V02 ECN 725

## CUSTOMISED STAINLESS STEEL SYSTEMS, FABRICATIONS AND COMPONENTS

### Axium Process Ltd

Hendy Industrial Estate, Hendy, Swansea, UK SA4 0XP

Tel: +44 (0) 1792 883882

Fax: +44 (0) 1792 886049

Email: [info@axiumprocess.com](mailto:info@axiumprocess.com)

Web: [www.axiumprocess.com](http://www.axiumprocess.com)



All data is provided in good faith and is subject to change