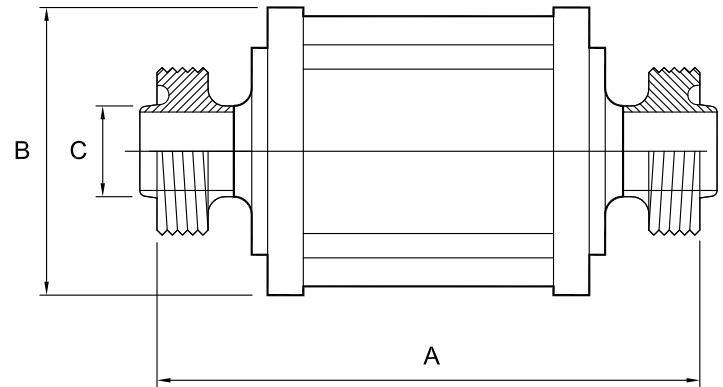


1116

RJT Sightglass, tubular - 316L



Nom size	A	B	C	Max Op @ 110°C Pressure (bar)	Stock No
1"	165.0	55.0	1"	10	1116-6026
1½"	165.0	70.0	1½"	10	1116-6038
2"	165.0	85.0	2"	10	1116-6051
2½"	165.0	95.0	2½"	10	1116-6064
3"	165.0	105.0	3"	10	1116-6076
4"	165.0	140.0	4"	10	1116-6102

Technical Data:

- Material: 316L Stainless Steel
- Finish: 0.8RA or better
- Pressure/Temperature: See above (temp according to seal material)
- Associated standards: BS 4825 : Part 5 : 1991, ASTM A269, ASTM A270, ASTM A312
- Tolerance: +/- 0.5mm
- Seals: EPDM, Silicone, Viton®, Nitrile, Encapsulated & Solid PTFE

- We stock a comprehensive range of plain-ended fittings including bends, tees, reducers, "Y" pieces, hosetails and equal cross pieces
- Components can be fabricated to customer specification
- Fabrication capabilities include frameworks, skid mounted systems, manifolds, jacketed assemblies, adaptors, flowplates and spool pieces.
- In-house services include machining, welding, fabrication, polishing.

D1116 - V01

NOTES

- Dimensions are provided in good faith but maybe subject to change
- Seals must be chosen for required operating medium & temperature

Axium Process Ltd
Hendy Industrial Estate
Hendy, Swansea
SA4 0XP
UK

FORM No: FM002-V02

(T) +44 (0)1792 883 882
 (F) +44 (0)1792 886 049
 (E) info@axiumprocess.com
 (W) www.axiumprocess.com