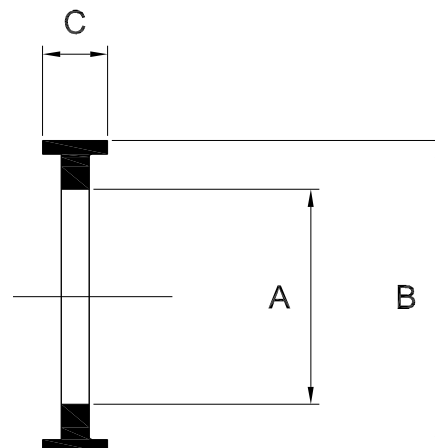


2043 IDF Seal – Nitrile Other Seal Materials Available

Nominal size	A	B	C	Stock number
1"	23.2	32.5	7.0	2043-1026
1 ½"	35.9	46.0	7.0	2043-1038
2"	48.6	59.5	7.0	2043-1051
2 ½"	61.3	73.2	7.0	2043-1064
3"	74.0	86.5	7.0	2043-1076
4"	98.6	119.0	9.6	2043-1102



TECHNICAL DATA	
Associated Standards	BS 4825 : Part 4: 1991 (1" to 4" inclusive)
Material Options	Nitrile, EPDM, Solid PTFE.
Pressure/Temperature	See table (Temperature according to seal material selected)
Applications	Used widely throughout the dairy industry
IDF Fittings Range	Unions, blanks, tees, bends, hoseliners, adaptors, concentric & eccentric reducers, Y pieces
Notes	Dimensions are provided in good faith. Suitable seals must be chosen for required operating medium and temperature
GENERAL CAPABILITIES	
Design and System Fabrication, Hygienic Process Plant, Project Management, In-house Manual and Orbital Welding, Machining, Fabrication and Polishing, Component Customisation	
Full materials certification, weld maps, logs, welder qualifications and weld procedures, pickling, passivation and ferroxyl certification.	

Seal materials and characteristics

Seal Characteristics/Resistance	Nitrile or Buna	EPDM	PTFE and Encapsulated PTFE
Operating Temperatures	-20°C to +120 °C	-50°C to +150°C	-25°C to +250°C
Acids	Good	Good	Excellent
Alkalis	Fair/Good	Good	Excellent
Fats/Oils	Good/Excellent	Poor	Excellent
Petroleum	Good	Poor	Excellent
Steam	Fair	Excellent	Fair
Taste	Good	Good	Excellent
Colour	Good	Fair/Good	Excellent

The temperture range quoted is for guidance only

D2043-V02 / ECN 776

CUSTOMISED STAINLESS STEEL SYSTEMS, FABRICATIONS AND COMPONENTS

Axium Process Ltd

Hendy Industrial Estate, Hendy, Swansea, UK SA4 0XP

Tel: +44 (0) 1792 883882

Fax: +44 (0) 1792 886049

Email: info@axiumprocess.com

Web: www.axiumprocess.com



FS 83081

All data is provided in good faith and is subject to change